

# St. Catherine's Primary School

Principal: Mrs. Bridget Wilders B.Ed. P.G. Dip.Ed. P.Q.H.

Email: bwilders592@c2kni.net



## JUNIOR SITE

Phone: (028) 7138 2272

Fax: (028) 7138 2139

Strabane  
Co. Tyrone  
BT82 8HT

## SENIOR SITE

Phone: (028) 7138 2614

Fax: (028) 7138 2482

Download Our **FREE** School App St Catherines PS, Strabane



Facebook : StCatherines PrimarySchool



Follow us on Twitter : stcatherinesps



Follow us on Instagram : St Catherine's Primary School

**Monthly Note: Tuesday 2<sup>nd</sup> May 2023**

**Check us out on our website: [www.stcatherinesps.co.uk](http://www.stcatherinesps.co.uk)**

## **BREAKING NEWS.....TICKETS ON SALE!!!!**

Mary Poppins Musical will be staged in St. Patrick's Hall on **TUESDAY 23<sup>RD</sup> MAY**, **WEDNESDAY 24<sup>TH</sup> MAY** and **FRIDAY 26<sup>TH</sup> MAY**. We are so excited as this has been our first **SENIOR SCHOOL MUSICAL** since The Lion King in June 2017! Children and staff are delighted to be back in our own Parish Hall to entertain you all with loads of Mary Poppins fun! **GET YOUR TICKETS NOW!!**



# **A Supercalifragilisticexpialidocious Adventure for St Catherine's!**

MARY POPPINS JR

ST CATHERINE'S SENIOR SCHOOL

Based on one of the most popular Disney movies of all time, Mary Poppins the Musical is capturing the hearts of the staff and pupils of St Catherine's! Our talented pupils are full of enthusiasm and our corridors are alive with dancing chimney sweeps, magical nannies and flying kites!

Our story begins when the jack-of-all trades, Bert, introduces us to England in 1910 and the troubled Banks family. Young Jane and Michael have sent many a nanny packing before Mary Poppins arrives on their doorstep. Using a combination of magic and common sense, she must teach the family members how to value each other again. Mary Poppins takes the children on many magical and memorable adventures, but Jane and Michael aren't the only ones upon whom she has a profound effect. Even grown-ups can learn a lesson or two from the nanny who advises that "Anything can happen if you let it."

Following from our first musical, The Lion King in June 2017, the Senior Pupils of St Catherine's are now ready to return to the stage for this truly magical show! Together with their teachers, classroom assistants and choreographers, the pupils have been involved in all areas of the creative production from set design to prop making, singing to dancing!

With such an enchanting mixture of irresistible story, unforgettable songs and breathtaking dance numbers- Mary Poppins Jr promises to be a beautiful, colourful and emotive production for all the family!

Cherry Tree Lane will come alive in St. Patrick's Hall on Tuesday 23rd, Wednesday 24<sup>th</sup> and Friday 26<sup>th</sup> May.

# Get Your Tickets Now

TICKETS RELEASE DATES : FROM 2pm-3pm on MONDAY 24<sup>TH</sup> APRIL.

Tickets will be on sale every day from 2pm-3pm in the SENIOR SCHOOL SITE OFFICE.

**THREE Tickets per child will be reserved for each child in Years 5,6 and 7 . If parents wish to buy these tickets they should do so no later than TUESDAY 2<sup>ND</sup> MAY or contact the office staff to arrange collection.** If these tickets are not purchased by Tuesday 2<sup>nd</sup> May they will go on general sale to anyone who wants them on a FIRST COME FIRST SERVED Basis.

Tickets will be available from St Catherine's PS Office, SENIOR SITE, Barrack Street Strabane, 028 71 382272 OPTION 1.

WHAT Mary Poppins Jr

WHEN Tuesday 23<sup>rd</sup>, Wednesday 24<sup>th</sup> and Friday 26<sup>th</sup> May 23

WHERE St Patrick's Hall, Barrack Street, Strabane

TICKETS £10.00 (available from school office, 028 71382272 Option 1 SENIOR SCHOOL)



# **SPONSORSHIP : We need your help!**

**As you may be aware a show of the calibre of Mary Poppins costs a considerable amount of money to stage. However the benefits to our little children of having had the experience of taking part in such a production are totally invaluable. To that end we warmly invite sponsorship from Local Businesses and parents. If you / your business or if you know any business person who might like to be a sponsor for our show please either cash donation OR prizes for raffles on the nights of the show, please contact Mrs Wilders [bwilders592@c2kni.net](mailto:bwilders592@c2kni.net) no later than Friday 5<sup>th</sup> May (this is the new date when the Mary Poppins Musical Programme will be sent to print). Thanks to those who have very kindly donated already, so much appreciated.**

**In grateful acknowledgement of any sponsorship kindly given, we will .....**

- 1. Display Sponsors Names outside our two schools sites**
- 2. Create a social media film advertising the sponsors**
- 3. Include Sponsors in our Programme for Mary Poppins to be given out on each of the three nights of the show.**

**We are so aware that these are the most economically challenging of times for parents, businesses and our community as a whole and therefore, we are so grateful for any support that can be given to us in the promotion of this important educational, social and artistic experience for our little children. Heartfelt thanks for considering. God bless.**



## Uniform Savings Club

As you know, our Uniform Supplier is SELECT KIDZ who are based in Derry. They have asked us to remind parents know that they have premises at 105 Spencer Road, Derry BT47 6AE.

The staff from Select Kidz will be running a Uniform Savings Club again this year in St Catherine's for any parent who would like to join. Parents report to us every year that they like the idea of saving for the uniforms and for getting the chance to fit children with items in the school. This year more than ever, costs are rising. Fuel costs are rising, shopping costs etc. This is a very good chance for everyone to consider enrolling in the Uniform Savings Club to help ease any pressure of Uniform Costs going forward.

To this end, Staff from SELECT KIDZ will visit our school on the following dates to run the Uniform Savings Club:

**Thursday 11<sup>th</sup> May 9.30am-10.30am in the Assembly Hall in the JUNIOR SCHOOL**

**Thursday 25<sup>th</sup> May 9.30am-10.30am in the Assembly Hall in the JUNIOR SCHOOL**

**Thursday 8<sup>th</sup> June 9.30am-10.30am in the Assembly Hall in the JUNIOR SCHOOL**

**Thursday 15<sup>th</sup> June 9.30am-10.30am in the Assembly Hall in the JUNIOR SCHOOL**

**Thursday 22<sup>nd</sup> June 9.30am-10.30am in the Assembly Hall in the JUNIOR SCHOOL**

**Thursday 29<sup>th</sup> June 9.30am-10.30am in the Assembly Hall in the JUNIOR SCHOOL.**

(Thursday 29<sup>th</sup> June is the LAST DAY And ALL UNIFORMS SHOULD BE PAID FOR/ COLLECTED FROM SCHOOL ON THIS DAY.)

**\*\*\* Select Kidz will also offering a variety of Summer Deals on Uniform Packages this year. We will email this information as soon as it is available  
\*\*\*\***



## Summer Uniform

Every year, children may wear their Summer Uniform when the weather gets a little warmer. Therefore children may wear their Summer Uniform (only if they choose to) from **Tuesday 2<sup>nd</sup> May after the May Break.**

**Girls:** Blue/ White Summer Dress, white socks (full length or ankle socks) and black shoes. Current school jumper or cardigan can also be worn with their dress.

**Boys:** Plain white poloshirt, PLAIN NAVY TROUSER Shorts or school navy trousers, black/ navy socks, black shoes or PLAIN BLACK Trainers. Current school jumper or cardigan can also be worn. Some parents have used old trousers that are too short and cut them to make them into TROUSER SHORTS! More economical and recycling is always good!

**PLEASE NOTE THAT CHILDREN SHOULD NOT WEAR FOOTBALL TOPS OR SHORTS AS THIS IS NOT PART OF OUR SUMMER UNIFORM.** We greatly appreciate your support in this matter. It should also be noted that from time to time children may be asked to wear FULL WINTER UNIFORM in order to attend special significant events. If this is required, we will let you know.

### Summer Uniform

#### Girls



Light blue and white checked dress  
White full length/ ankle socks



Children can wear their Jumper/ Cardigan all year round

#### Boys



White polo shirt  
Navy trouser shorts/ trousers  
Navy/ black socks

All children should wear plain black shoes/ trainers

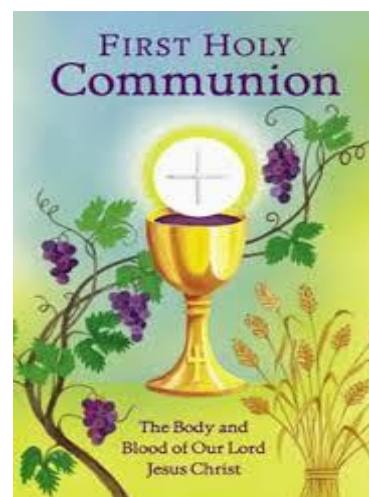
It is to be noted that our School Summer Uniform is NOT compulsory, and parents need not feel under any pressure to purchase it. If parents do not wish to use the Summer Uniform or have problems getting it then the current uniform is fine. Many thanks!

Finally, please note that little Nursery Pupils wear the same Uniform all year round. (poloshirt with logo, sweatshirt with logo and navy jogging bottoms)



# Restarting our Holy Communion Procession from the Grotto to the Church of the Immaculate Conception

As discussed at our Year 4 Do This in Memory Team meeting for Parents earlier in the year, we have decided to restart an old tradition of culture and faith that used to be present in our parish many years ago....the Holy Communion Children's Procession from the Grotto to the Church. On **SUNDAY 21<sup>st</sup> May** (feast of the Ascension), Fr Boland will lead this procession carrying the host of our Lord Jesus Christ to the church. Year 4 Pupils should **arrive at the Grotto (dressed in their First Holy Communion Outfits) no later than 11.15am. Staff will be there.** Pupils and parents can then process to the church together for 12 Noon Mass and take their seats in the Church when they arrive. Seats will be reserved for them. Hopefully the weather will be kind to us! This is an age old tradition in our parish and we are so excited to restart this. It is lovely that May is the Month dedicated to Mary and that the Sunday 21<sup>st</sup> May is the feast of the Ascension also. This will be the last chance that our little pupils will have to get wearing their First Holy Communion outfits (before they grow out of them!). This is also the last of the Do This in Memory Masses for our Year 4 Children and will be very special indeed. See you all there! More details will follow just before the event.



## **Sports Days**

This year we will be having Sports Events for our little pupils with dates in June due to Mary Poppins Musical and the week off.

Miss Keyes (PE/ Health and Safety Leader) will be issuing a FINAL letter before then to explain arrangements for Sports Days in St. Catherine's May 2023. The format of the Sports Events will be the same as last year, class by class. We are hopeful that we can go ahead with Sports (Weather permitting) on 7<sup>th</sup>, 9<sup>th</sup>, 12<sup>th</sup> and 13<sup>th</sup> June. Sample timetable attached but this is subject to change. If it has to change, we will let you know at the earliest possible opportunity.



## **Upcoming School Closures:**

**Bank Holiday due to Coronation: Monday 8<sup>th</sup> May**

**Election Day : Thursday 18<sup>th</sup> May**

**May Week Off (This year only) : Monday 29<sup>th</sup> May – Friday 2<sup>nd</sup> June (Inclusive). School reopens as usual on Monday 5<sup>th</sup> June**





## Prayer of the Month May



## PATHS Programme in St. Catherine's

(Promoting Alternative Thinking Strategies)

### PATHS Quote of the Month May

Making choices can affect you and others. Be wise, stop and think to help you make good choices.

Choose to be peaceful

Choose to be kind

Choose to be helpful

What good choices can you make today?



## Nursery

### Sharing From the Start TRIP!

**Gentle Reminder: Our little Nursery Pupils will be getting the chance to go to Lifford / Strabane Cineplex on Wednesday 10<sup>th</sup> May with their little friends from Strabane Controlled Nursery and their parents! What a lovely trip out. Letters have been distributed already about this ...but just a gentle reminder that excitement is building!!!!**



### Encouraging School Attendance!

We are delighted that we have no further challenges to our little children attending face to face teaching and learning in school like we suffered during Covid. To this end, we ask for parents support by encouraging school attendance every day. We understand that from time to time a child may be ill and if this happens please email the teacher or ring the school so that the correct absence code can be recorded for your child to explain the absence. Our school policy aims for at least 90% school attendance for every child. Help us to achieve this. To this end we will be giving out termly BREAKFAST CLUB VOUCHERS for any child who achieves 90% and more attendance. (Previously we gave for 100% but in order to support and encourage our children trying so hard we will give these vouchers now for any child who achieves between 90-100%). Thank you for your continued support!





## **Nursery and Year 1 Places for September 2023!**

The Education Authority have sent all parents an email notification detailing the name of the Nursery School or Primary School that they have gained a place in on Thursday 27<sup>th</sup> April.

Schools are no longer required to send out letters regarding the offer of places due to this online admissions system.

When you do receive your offer of a place however you should then either accept or decline this offer by emailing the Principal Mrs Wilders on [bwilders592@c2kni.net](mailto:bwilders592@c2kni.net) or Mrs C Kelly (Admissions Officer) on [ckelly452@c2kni.net](mailto:ckelly452@c2kni.net)

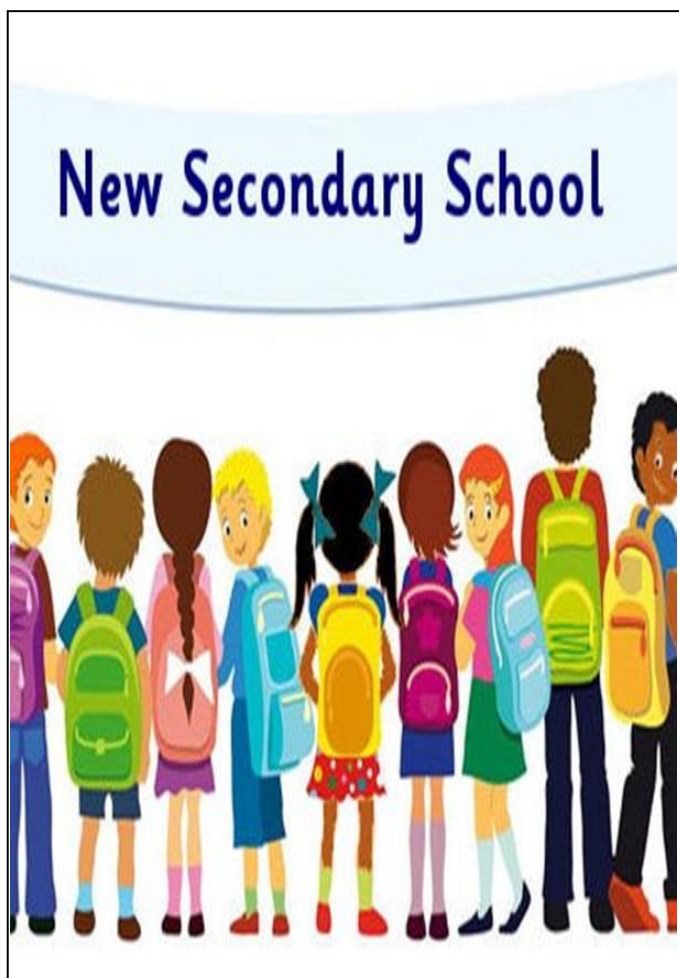
After you have accepted the offer we will be in touch with you to plan for the "WELCOME DAY". More details will then follow regarding this.



## **Year 7 Post Primary Places (Notifications of New Schools)**

### **Parents Information:**

**Due to the new ONLINE ADMISSIONS Process for Year 7 Pupils, parents will receive an email on SATURDAY 20<sup>th</sup> May to confirm the name of the post primary school where your child has been offered a place.**





## Traffic

We are aware of the ongoing Traffic Concerns and congestion that can occur at our two sites during drop off and collection times. We are actively liaising with agencies to undertake a traffic management review and to try to improve the issue. We appreciate your patience and support while this matter is ongoing. To that end, keeping the flow of traffic in Newtownkenedy Street and Barrack Street is crucial. We respectfully request that parents do not park on double yellow lines or double park in the road to cause congestion so that traffic flow can be sustained. We are fortunate to have School Crossing Patrol People at both sites who are actively doing their best to keep our little children safe however double parking can cause vision obstructions for our children who need to cross the road. We thank you once again for your patience, support, understanding and tolerance.



## School is going CASHLESS! School Money App

We have been trialling School Money App and so far it works well. We will be adding more payment opportunities to it and now encourage all parents to use **SCHOOL MONEY APP** as the way to pay school dinners, milk money, school trip money etc. If you have any queries or difficulties with using this facility please contact Clerical Staff on any of our school sites. Thank you!



## Family Club

(For pupils in Year 1 or 2 who have older siblings at our school)

**Gentle Reminder:**

Fee for Family Club is £2 per week to be made payable on the **MONDAY** of the week. Please send £2 in with your child in an envelope with their name and **FAMILY CLUB** clearly marked on it so that this can be passed to our Family Club Team. This very small fee is to cover costs of snacks in the club. School subsidizes the cost of staffing so that minimal expense is incurred to our parents.



# Call for Blood/ Bone Marrow / Stem Cell Donation

As you may be aware we have a little pupil who needs a Bone Marrow Transplant, our wee Holly. The family are appealing to our parents and wider community to help with

1. Blood donations
2. Bone Marrow Donors

Please give blood if you can to help Holly and children like her. If you request a stem cell swab kit you can also be tested for being able to donate stem cells and bone marrow which could help Holly and others.

Many thanks to anyone who can help. We continue to keep wee Holly in our thoughts and prayers and wish for a speedy recovery. We also keep her mummy, daddy and little brother in our prayers too. God bless  
If you would like to request a STEM CELL SWAB KIT just click on the email link below.

([donor@engage.dkms.org.uk](mailto:donor@engage.dkms.org.uk))

Please see also below the link to The Anthony Nolan Trust who support children like Holly by building a STEM Cell Register with donors aged between 16-30 as research shows that younger donors improve outcomes. Please support if you can.

<https://www.anthonynolan.org/>



## Concert for Holly

Many thanks to everyone who was able to come along to support the Concert for Holly in the Church of the Immaculate Conception on Sunday 23<sup>rd</sup> April. So far there has been almost £3500 raised.

Thanks to all our little pupils who took part, we are so proud of you all.

Thanks to Mrs Deery who prepared our children so well and to Miss Keyes for Year 7 B contribution.



## **Community Support Notice**

**If your family or any family that you know needs any emergency help now in the New Year**

**Help can be sought by contacting the Society of St. Vincent De Paul.**

**The helpline number is 02871 384488.**

**When the helpline number is rung; please leave the name, address and telephone number in a message seeking help and the type of assistance needed. (For example food vouchers, oil vouchers etc).**

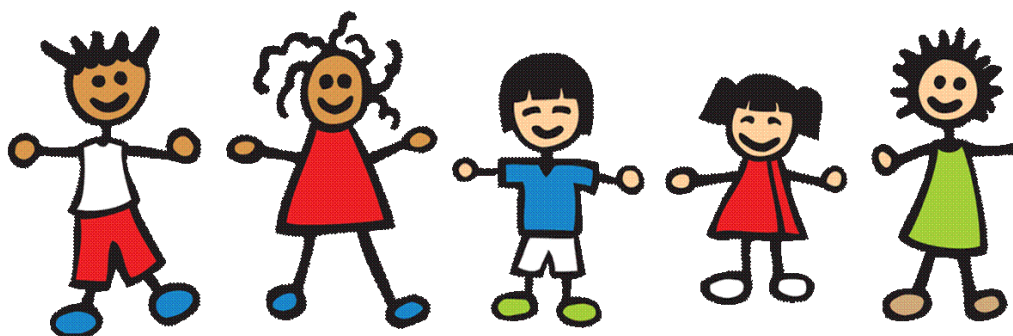
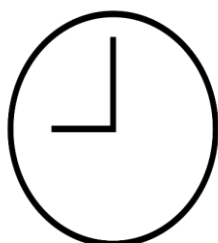




## School Start Times and Collection Times

Year Group	Drop off / Collection Point	Start Time	Finish Time
Nursery Room 1	Nursery Room 1 External Door	9am-9.30am	1.30pm- 1.40pm
Nursery Room 2	Nursery Room 2 External Door	9am-9.30am	1.30pm- 1.40pm
Year 1A (Mrs Doherty)	Pupil Front door facing school gate	8.50am-9am	2.10pm
Year 1B (Miss Hutton)	Back Door opposite the Play Trail	8.50am-9am	2.10pm
Year 2 A (Mrs Mc Glynn)	Back Door opposite the Play Trail	8.50am-9am	2.15pm
Year 2 B (Ms Y Mc Gowan)	Pupil Front door facing school gate nearest to Mrs Doherty's classroom in Junior School Site	8.50am-9am	2.15pm
Learning Centre (Mrs Hamilton)	Middle Floor Door near mobile classroom at the back of the Junior School	8.50am-9am	2.10pm (Year 1) 2.15pm (Year 2)  3pm (Year 3 Pupils except Feel Good Friday)
Year 3 A ( Mrs M Mc Brien/ Miss E Mc Kane )	Pedestrian Gate to the right of the Main Gate at the Junior School Site	8.50am-9am	Mon – Thursday 3.00pm (2.30pm On Feel Good Friday)
Year 3 B (Mrs S Vaughan)	Pedestrian Gate to the right of the Main Gate at the Junior School Site	8.50am-9am	Mon – Thursday 3.00pm (2.30pm On Feel Good Friday)
Year 4 A (Ms K Carlin)	Pedestrian Gate to the right of the Main Gate at the Junior School Site	8.50am-9am	Mon – Thursday 3.00pm (2.30pm On Feel Good Friday)
Year 4 B (Mrs Connolly)	Pedestrian Gate to the right of the Main Gate at the Junior School Site	8.50am-9am	Mon – Thursday 3.00pm (2.30pm On Feel Good Friday)
Year 5 A (Mrs C Gormley)	Enter Gate at the right hand side of the Senior School and line up at Year 5A Meeting Point where teacher will collect the class	8.50am-9am	Mon – Thursday 3.00pm (2.30pm On Feel Good Friday)
Year 5 B (Miss B Kelly)	Enter Gate at the right hand side of the Senior School and line up at Year 5B	8.50am-9am	Mon – Thursday 3.00pm (2.30pm On Feel Good Friday)

	Meeting Point where teacher will collect the class		
Year 6 A (Mrs S.O'Kane )	Enter Gate at the right hand side of the Senior School and line up at Year 6A Meeting Point where teacher will collect the class	8.50am-9am	Mon – Thursday 3.00pm (2.30pm On Feel Good Friday)
Year 6 B (Mrs B Daly)	Enter Gate at the right hand side of the Senior School and line up at Year 6B Meeting Point where teacher will collect the class	8.50am-9am	Mon – Thursday 3.00pm (2.30pm On Feel Good Friday)
Year 7 A (Mrs C Deery)	Enter Double Gate at front of Senior School site nearest to the Main Front Door and line up at Year 7A Meeting Point where teacher will collect the class	8.50am-9am	Mon – Thursday 3.00pm (2.30pm On Feel Good Friday)
Year 7 B (Miss E Keyes)	Enter Double Gate at front of Senior School site nearest to the Main Front Door and line up at Year 7B Meeting Point where teacher will collect the class	8.50am-9am	Mon – Thursday 3.00pm (2.30pm On Feel Good Friday)
Year 7 C (Mrs C Gillespie/ Miss A Kerr)	Enter Double Gate at front of Senior School site nearest to the Main Front Door and line up at Year 7C Meeting Point where teacher will collect the class	8.50am-9am	Mon – Thursday 3.00pm (2.30pm On Feel Good Friday)



## Staff roles and Email addresses.

Staff Member	Class / Role	Email Address
Mrs Bridget Wilders	Principal	<a href="mailto:bwilders592@c2kni.net">bwilders592@c2kni.net</a>
Miss Jennifer Doherty	Vice Principal	<a href="mailto:jdoherthy742@c2kni.net">jdoherthy742@c2kni.net</a>
Mrs B. Porter	Nursery Room 1	<a href="mailto:bporter544@c2kni.net">bporter544@c2kni.net</a>
Ms E Mathers	Nursery Room 2	<a href="mailto:emathers571@c2kni.net">emathers571@c2kni.net</a>
Mrs D. Doherty	Year 1 A	<a href="mailto:ddoherty115@c2kni.net">ddoherty115@c2kni.net</a>
Miss C. Hutton	Year 1 B	<a href="mailto:chutton763@c2kni.net">chutton763@c2kni.net</a>
Miss E Mc Kane	Year 2 A	<a href="mailto:emckane477@c2kni.net">emckane477@c2kni.net</a>
Ms Y Mc Gowan	Year 2 B	<a href="mailto:ymcgowan609@c2kni.net">ymcgowan609@c2kni.net</a>
Mrs M Mc Brien/	Year 3 A	<a href="mailto:mmcbrien385@c2kni.net">mmcbrien385@c2kni.net</a>
Mrs S Vaughan	Year 3 B	<a href="mailto:svaughan325@c2kni.net">svaughan325@c2kni.net</a>
Ms K Carlin	Year 4 A	<a href="mailto:kcarlin208@c2kni.net">kcarlin208@c2kni.net</a>
Mrs C. Connolly	Year 4 B	<a href="mailto:cconnolly309@c2kni.net">cconnolly309@c2kni.net</a>
Mrs C. Gormley/ Miss C Gallagher	Year 5 A	<a href="mailto:cgallagher328@c2kni.net">cgallagher328@c2kni.net</a>
Mrs C Gillespie	Year 5 B	<a href="mailto:cgillespie221@c2kni.net">cgillespie221@c2kni.net</a>
Mrs S O'Kane	Year 6 A	<a href="mailto:sokane510@c2kni.net">sokane510@c2kni.net</a>
Mrs B Daly	Year 6 B	<a href="mailto:bdaly611@c2kni.net">bdaly611@c2kni.net</a>
Mrs C. Deery	Year 7 A	<a href="mailto:cdeery318@c2kni.net">cdeery318@c2kni.net</a>
Miss E. Keyes	Year 7 B	<a href="mailto:ekeyes746@c2kni.net">ekeyes746@c2kni.net</a>
Miss A Kerr	Year 7 C	<a href="mailto:akerr341@c2kni.net">akerr341@c2kni.net</a>
Mrs. C. Hamilton	Learning Centre	<a href="mailto:chamilton290@c2kni.net">chamilton290@c2kni.net</a>





## Site Leadership Rota

**Junior School : Monday, Wednesday, Friday – Mrs Wilders**

**Tuesday, Thursday - Miss J Doherty**

**Senior School: Monday, Wednesday, Friday – Miss J Doherty**

**Tuesday, Thursday – Mrs Wilders**

**In the event that the Principal or Vice Principal are not available Senior Leaders or any of the Middle Leadership Team will become available for consultation.**

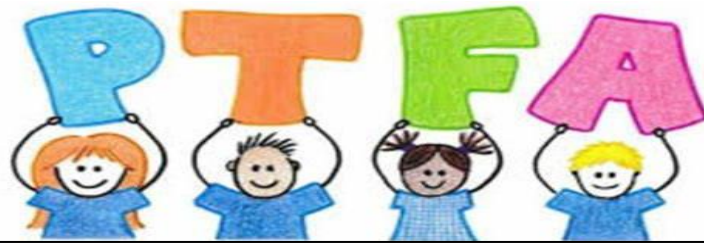


## Staff Parking

**There is a Car Park on each site for STAFF. Staff arrive at school from 8.20am approx. every morning right up to 9am. To this end, we respectfully request that the entrances to the STAFF Car Parks on each site are always kept clear so that staff can gain access to each site and get ready to start the day with our wee children!!**

**Parents/carers/ child minders/ taxi drivers etc may NOT enter the school car park for Health and Safety Reasons unless this has been prearranged with school management for a specific reason.**





April 2023 Updates :



**NEXT MEETING: Wednesday 3<sup>rd</sup> May @6.30pm JS**

**If anyone would like to join our P.T.F.A. to give a little time to helping raise much needed funds for our little children in school, you are more than welcome....always happy to have more in the team!**

**Sincerely Yours in Community Spirit,**

**St. Catherine's Primary and Nursery School P.T.F.A.**

# Surestart Message of the Month

May 2023

Talk to me before I'm born  
...Think of the bond we will form



Sing a rhyme anytime  
Start your child learning  
for a lifetime!



# We are a Healthy Eating School in St. Catherine's.

Below are the list of foods that are acceptable / not acceptable for Healthy Eating Purposes.

If you have any concerns please consult your child's teacher.

<b><i>Foods we consider acceptable:</i></b>	<b><i>Foods that are not acceptable:</i></b>
Fruit (except kiwi)	Nuts or any other products with a nut content / trace
Fruit pots	Crisps
Rice pots	Sweets
Custard pots (not chocolate flavour)	Chocolate Bars
Jelly pots	Chocolate yoghurts
Vegetables (eg. carrot sticks / celery sticks)	Chocolate Muller Corners
Sandwiches (no chocolate spreads or no peanut butter)	Chocolate biscuits
Scones	Chocolate chip cookies
Wheaten bread	All cereal bars
Pitta bread	Square Bars
Tortilla Bread	Lunchables
Pancakes	Iced Buns
Croissants (no chocolate brioche)	Pepperami
Plain buns	Fruit Winders
Ryvita / crispbreads	
Yoghurts	
Plain biscuits: Rich Tea, Digestives, Plain Crackers and Belvita Plain Biscuits	
Cheese / Dairy Lea Triangles / Cheese Slices / Baby Bel / Cheese Strings	
Breadsticks / Pretzels	
Rice Cakes	
Snack a Jacks	

<b><i>Foods that are not acceptable:</i></b>	<b><i>Reason Why:</i></b>
Nuts or any other products with a nut content / trace	We have children with a nut allergy
Crisps	High fat and salt content
Sweets	High sugar content
Chocolate Bars, chocolate yoghurts, chocolate Muller Corners, chocolate biscuits and chocolate chip cookies	High sugar content and many brands of chocolate contain traces of nuts
All cereal bars and Square Bars	High in sugar and fat content
Lunchables	High sugar content
Iced Buns	High sugar content
Pepperami	High fat content
Fruit Winders	High sugar content

Healthy  
Habits



# St. Catherine's Nursery & Primary School

## May 2023



Sunday	Monday	Tuesday	Wednesday	Thursday	Friday	Saturday
Test Week 2	1. Bank Holiday; School Closed	2. <b>Summer Uniform can be worn from today.</b>	3. 6.30pm PTFA Meeting in Junior School Slimming World JS: 5.30pm – 7.30pm	4. 150 <sup>th</sup> Anniversary for St Eugene's Cathedral, Derry. Bells will ring at 2pm.	5. P7B Your Life (Hope NorthWest)	6.
7. Test Week 3	8. School Closed: King's Coronation	9.	10. Nursery Sharing from the Start trip to Lifford Cinema.  Slimming World JS: 5.30pm – 7.30pm	11.	12.	13.
14. Test Week 4	15. No Homework for KS2 children	16.	17.  Slimming World JS: 5.30pm – 7.30pm	18. School closed: Election Day  Mary Poppins Cast Rehearsal St Pat's Hall	19. School Show: Mary Poppins Technical Rehearsal	20. EA Notification to Year 7 parents of Post Primary Applications
21. 11.15am Year 4  Do this in Memory: Procession from the Grotto to Chapel for	22. School Show: Mary Poppins Dress Rehearsal	23.  7.30pm Mary Poppins performance	24. Nursery Graduation Photos.  7.30pm Mary Poppins performance	25.	26.  7.30pm Mary Poppins performance	27.
28.  Week Off	29.	30.	31.  Slimming World JS: 5.30pm – 7.30pm			

**School Dinner Menu – January 2023 onwards (Please note that soup/ sandwiches are also available daily upon request if pupils do not wish to avail of the hot food choices)**

No - one is ever too old to learn, enjoy the opportunities.





# St Catherine's Nursery School Lunch Menu

	Monday	Tuesday	Wednesday	Thursday	Friday
<b>Week 1</b>  WB: 3 <sup>rd</sup> March 1 <sup>st</sup> May 29 <sup>th</sup> May 26 <sup>th</sup> June	Golden Crumbed Fish Fillet  Chipped Potatoes/Baked Potatoes Baked Beans & Garden Peas  Vanilla Ice-Cream & Fruit	Homemade Beef Bolognaise  Pasta Spirals/ Baked Potato Crusty Bread/Sweetcorn/Coleslaw  Fruit Sponge Fingers & Custard	Homemade Chicken Curry & Naan Bread  Boiled Rice, Potato Wedges & Peas/Tossed Salad  Chocolate Sponge & Custard	Roast Gammon/Pork with Stuffing & Gravy  Mash & Oven Roast Potatoes Garden Peas/Carrots & Parsnip  Strawberry Mousse and Fruit	Hotdog  Diced / Chips / Potatoes/Baked Potatoes & Side Salad Coleslaw  Homemade Shortbread / Fresh Fruit Salad
<b>Week 2</b>  WB: 10 <sup>th</sup> April 8 <sup>th</sup> May 5 <sup>th</sup> June	Oven Baked Chicken Nuggets  Chipped/Mashed Potatoes Sweetcorn & Baked Beans  Pear Sponge and Chocolate Sauce	Homemade Beef Mince Pie & Gravy  Mashed Potatoes/Crusty Bread Peas & Carrots  Rice Krispie Square and Milkshake	Chicken Curry & Naan Bread  Diced Potatoes/ Rice Garden Peas  Frozen Mousse	Roast Turkey with Stuffing & Gravy  Mash & Oven Roast Potatoes Cabbage & Baton Carrots  Cornflake Tart & Custard	Beef Burger & Bap  Chipped/Baked Potatoes/Salad Coleslaw  Popcorn Cookie/Fresh Fruit
<b>Week 3</b>  WB: 20 <sup>th</sup> March 17 <sup>th</sup> April 15 <sup>th</sup> May 12 <sup>th</sup> June	Oven Baked Pork Sausages  Chipped Potatoes/Mash Potato/Coleslaw Baked Beans & Garden Peas  Ice-Cream & Pears with Hot Chocolate Sauce	Oven Baked Fish Fingers  Diced Potato/Mashed Potato Spaghetti Hoops/Coleslaw  Zesty Orange Sponge & Custard	Pepperoni Pizza Slice Mash Potatoes Boiled Rice Sweetcorn  Carmel Tart and Custard	Roast Gammon/Pork with Stuffing & Gravy  Mash & Oven Roast Potatoes Baton Carrots & Fresh Cabbage  Decorated Iced Sponge Finger & Fruit	Oven Baked Breaded Fish  Chipped Potatoes & Mashed Potatoes Baked Beans/Garden Peas  Strawberry Milkshake & Flakemeal Biscuit
<b>Week 4</b>  WB: 27 <sup>th</sup> March 24 <sup>th</sup> April 22 <sup>nd</sup> May 19 <sup>th</sup> June	Oven Baked Chicken Goujons  Dice/Baked Potatoes/Sweetcorn  Fruit Sponge & Custard	Pepperoni Pizza Slice  Chipped /Baked Potatoes Garden Peas/Coleslaw  Vanilla Artic Roll & Two Fruit	Beef burger & Onion Gravy  Mashed Potato & Boiled Rice Carrots/Sweetcorn  Sticky Toffee Pudding & Custard	Roast Chicken Fillet with Stuffing & Gravy  Mash & Oven Roast Potatoes Broccoli/Carrots  Homemade Brownie and Milkshake	Chicken Burger  Chipped/Baked Potato Baked Beans/Coleslaw  Ice Cream Slider/tub and fresh fruit

**Breads, Milk, Water & Fresh Fruit Available Daily**

**If You Require Any Additional Information on Allergens or Special Diets Please Contact the School to complete a Special Diets Application Form**

# St Catherine's Primary School Lunch Menu

	Monday	Tuesday	Wednesday	Thursday	Friday
<b>Week 1</b>  WB: 3 <sup>rd</sup> March 1 <sup>st</sup> May 29 <sup>th</sup> May 26 <sup>th</sup> June	Golden Crumbed Fish Fillet Or Macaroni Cheese with Garlic Bread Slice  Chipped Potatoes/Baked Potatoes Baked Beans & Garden Peas  Vanilla Ice-Cream & Fruit	Homemade Beef Bolognese or Homemade Pepperoni Pizza  Pasta Spirals/ Baked Potato Crusty Bread/Sweetcorn/Coleslaw  Fruit Sponge Fingers & Custard	Southern Spiced Chicken Wrap or Homemade Chicken Curry & Naan Bread  Boiled Rice, Potato Wedges & Peas/Tossed Salad  Chocolate Sponge & Custard	Roast Gammon/Pork with Stuffing & Gravy  Mash & Oven Roast Potatoes Garden Peas/Carrots & Parsnip  Strawberry Mousse and Fruit	Hotdog or Sweet Chilli Chicken Panini  Diced / Chips / Potatoes/Baked Potatoes & Side Salad Coleslaw  Homemade Shortbread / Fresh Fruit Salad
<b>Week 2</b>  WB: 10 <sup>th</sup> April 8 <sup>th</sup> May 5 <sup>th</sup> June	Oven Baked Chicken Nuggets or Chicken & Pasta Bake  Chipped/Mashed Potatoes Sweetcorn & Baked Beans  Pear Sponge and Chocolate Sauce	Oven baked pork sausages or Ham & Cheese Panini  Mashed Potatoes/Crusty Bread Peas & Carrots  Rice Krispie Square and Milkshake	Chicken Curry & Naan Bread or Homemade Beef Lasagne & Coleslaw  Diced Potatoes/ Rice Garden Peas  Frozen Mousse	Roast Turkey with Stuffing & Gravy  Mash & Oven Roast Potatoes Fresh Cabbage & Baton Carrots  Cornflake Tart & Custard	Beef Burger & Bap with Cheese/Salad or Golden Crumbed Fish Fillet  Chipped/Baked Potatoes/Salad Coleslaw  Popcorn Cookie/Fresh Fruit
<b>Week 3</b>  WB: 20 <sup>th</sup> March 17 <sup>th</sup> April 15 <sup>th</sup> May 12 <sup>th</sup> June	Spiced Chicken Fajita or Oven Baked Pork Sausages  Chipped Potatoes/Mash Potato/Coleslaw Baked Beans & Garden Peas  Ice-Cream & Pears with Hot Chocolate Sauce	Oven Baked Fish Fingers or Chilli Beef with Garlic Slice  Diced Potato/Mashed Potato Spaghetti Hoops/Coleslaw  Zesty Orange Sponge & Custard	Homemade Chicken Curry with Naan Bread Or Pepperoni Pizza Slice Mash Potatoes Boiled Rice Sweetcorn  Carmel Tart and Custard	Roast Gammon/Pork with Stuffing & Gravy  Mash & Oven Roast Potatoes Baton Carrots & Fresh Cabbage  Decorated Iced Sponge Finger & Fruit	Hot Dog or Oven Baked Breaded Fish  Chipped Potatoes & Mashed Potatoes Baked Beans/Garden Peas  Strawberry Milkshake & Flakemeal Biscuit
<b>Week 4</b>  WB: 27 <sup>th</sup> March 24 <sup>th</sup> April 22 <sup>nd</sup> May 19 <sup>th</sup> June	Oven Baked Chicken Goujons or Pasta Bolognese in a Rich Tomato Sauce with Garlic Bread Slice  Dice/Baked Potatoes/Sweetcorn  Fruit Sponge & Custard	Homemade Chicken Pie or Pepperoni Pizza Slice  Chipped /Baked Potatoes Garden Peas/Coleslaw  Vanilla Artic Roll & Two Fruit	Beef burger & Onion Gravy or Chicken Curry & Naan Bread  Mashed Potato & Boiled Rice Carrots/Sweetcorn  Sticky Toffee Pudding & Custard	Roast Chicken Fillet with Stuffing & Gravy  Mash & Oven Roast Potatoes Broccoli/Carrots  Homemade Brownie and Milkshake	Chicken Burger & Salad or Oven Baked Fishcake  Chipped/Baked Potato Baked Beans/Coleslaw  Ice Cream Slider/tub and fresh fruit

**Breads, Milk, Water & Fresh Fruit Available Daily**

**Soup and Sandwiches are also Available Daily.**

**If You Require Any Additional Information on Allergens or Special Diets Please Contact the School to complete a Special Diets Application Form**

St. Catherine's Nursery & Primary School  
Sports Days 2023:

**Time Slots for Each Class:**

<b>Days</b>	<b>9.30am – 10.15am</b>	<b>10.30am – 11.15am</b>	<b>11.30am – 12.15pm</b>	<b>1.15pm-2.00pm</b>	<b>2.15pm-3.00pm</b>
<b>Day 1</b> <b>Wednesday</b> <b>7/06/23</b>	<b>P1B</b> <b>Miss Hutton</b>	<b>P1A</b> <b>Mrs Doherty</b>	<b>P2A</b> <b>Mrs McGlynn</b>	<b>P2B</b> <b>Ms McGowan</b>	<b>P3A</b> <b>Mrs McBrien</b>
<b>Day 2</b> <b>Friday</b> <b>9/06/23</b>	<b>NR1</b> <b>Mrs Porter</b>	<b>NR2</b> <b>Miss Mathers</b>	<b>P7B</b> <b>Miss Keyes</b>	<b>P7A</b> <b>Mrs Deery</b>	<b>P7C</b> <b>Miss Kerr</b> <b>***</b>
<b>Day 3</b> <b>Monday</b> <b>12/06/23</b>	<b>P4B</b> <b>Mrs Connolly</b>	<b>P4A</b> <b>Miss Carlin</b>	<b>P3B</b> <b>Mrs Vaughan</b>	<b>P5B</b> <b>Mrs Gillespie</b>	<b>P5A</b> <b>Mrs Gormley</b>
<b>Day 4</b> <b>Tuesday</b> <b>13/06/23</b>	<b>P6A</b> <b>Mrs O’Kane</b>	<b>P6B</b> <b>Mrs Daly</b>			

\*\*\*Pupils finish at 2.30pm