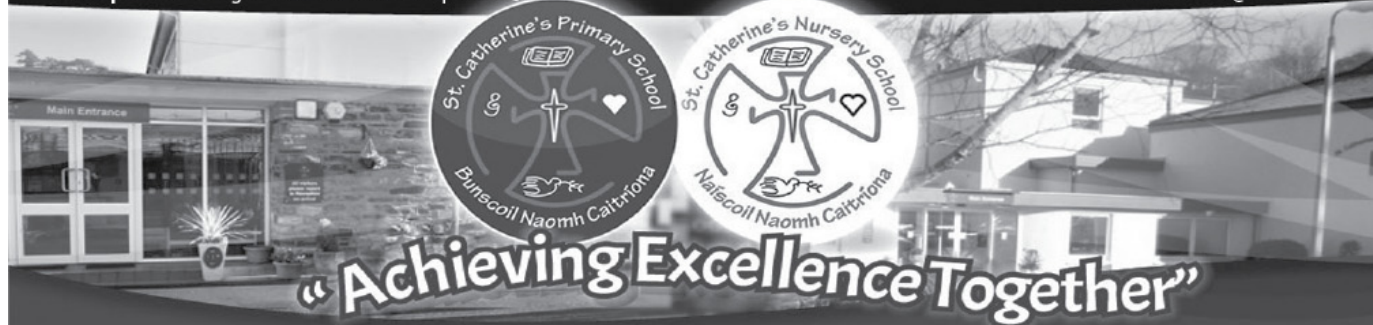


St. Catherine's Nursery School

Principal: Mrs. Bridget Wilders B.Ed. P.G. Dip.Ed. P.Q.H

Email: bwilders592@c2kni.net



JUNIOR SITE

Phone: (028) 7138 2272

Fax: (028) 7138 2139

Strabane

Co. Tyrone

BT82 8HT

SENIOR SITE

Phone: (028) 7138 2614

Fax: (028) 7138 2482

WEEKLY NOTE - Monday 11th March 2019

Check us out on our website: www.stcatherinesps.co.uk

Download Our **FREE** School App St. Catherines PS, Strabane



Facebook : StCatherines PrimarySchool



Follow us on Twitter : stcatherinesps



Follow us on Instagram : St Catherine's Primary School



School Closure for St. Patrick's Day

School will be closed on Monday 18th March to celebrate our annual St. Patrick's Day holiday on Sunday 17th!!

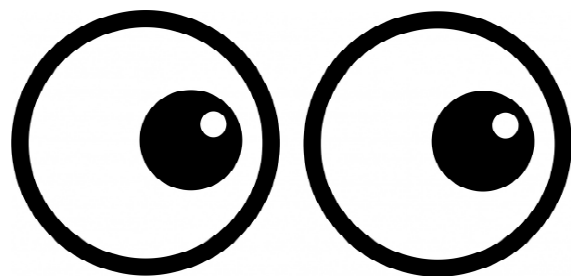
Have a lovely long weekend!!

We will see you all on Tuesday 19th March as usual.



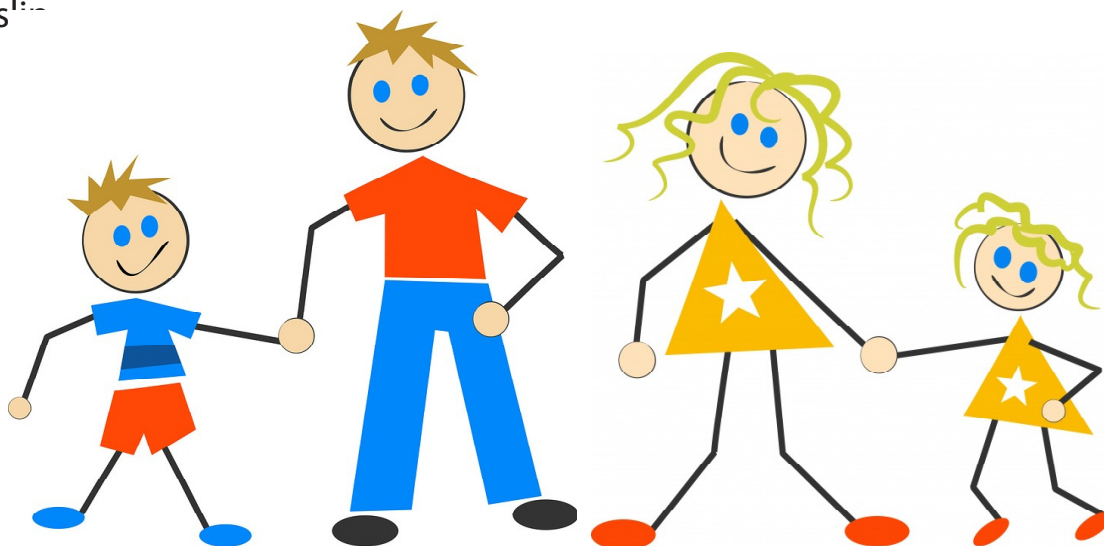
God bless you all! Bridget Wilders, Principal

KEEP AN EYE OUT!!



Parent and child FREE PLAY Workshop coming up!

Play is so important for our children in order to enhance their learning and develop their understanding and creativity. To this end, Parenting NI have joined up with Playboard NI to provide a FREE play workshop session for parents and children in our wee school. This is open to children and parents from Nursery – Year 4 age. This will take place in school. A date will become available soon. Watch this space.....exciting times! If you would be interested in such a workshop session please indicate on the attached expression of interest s'---



Parent, Teacher,
Friends Association
**Working together
for our children**

**The next meeting of our PTFA
will take place at 7pm in the
Junior School on Thursday
14th March.**

Everyone welcome!





Dear Parents/Carers,

Get set... we're taking part in Sustrans Big Pedal 2019, the UK's largest inter-school cycling, walking and scooting challenge. The challenge runs from 25 March to 5 April. It's free and we would love everyone to be involved.

The details

On each day of the challenge schools compete to see who can record the greatest number of pupils, staff and parents cycling, walking or scooting to school. Each day your class teacher will ask who has cycled, walked or used a scooter

It's a great way to get more of our pupils travelling actively to school and is a simple way to boost their physical and mental health.

Cycle, walk, scoot and snap to win family prizes

You and your family can also win prizes during Sustrans Big Pedal. Simply post a photo of you and your child cycling, walking or scooting to school on social media during the challenge using #BigPedalWin. To be in with a chance of winning, you'll need to follow Sustrans on Instagram [instagram.com/sustrans](https://www.instagram.com/sustrans), Twitter twitter.com/sustrans or Facebook [facebook.com/Sustrans](https://www.facebook.com/Sustrans). Be sure to check the terms and conditions found on the Big Pedal website prior to entering the competition.

What's next?

All you need to do is encourage your child(ren) to cycle, walk or scoot to school on as many days as possible during the event, and join them on their way.

To help you prepare, Sustrans has developed a handy free guide packed with advice, games and challenges to help you have hassle-free cycle, walk or scoot to school. Download your free pack [pdf].

For more information about the event go to www.bigpedal.org.uk. Enjoy the challenge!

Hydration Drinks for Children in School

Children bring drinks to school if they take packed lunches or sometimes as part of their mid morning break. Children can drink milk, fresh juice, dilute juice etc at these times.

During class time during the day we find that sometimes children like "Hydration Drinks" in order to keep them hydrated while doing their school work. These hydration drinks should only be WATER at these times.

We ask that parents support and understand this initiative in school.

Fizzy drinks are not encouraged in school at any time as part of our Food in Schools Policy.

High Energy Drinks are not permitted or encouraged for our children at any time due to their potential danger to our little children's physical health.

Many thanks for your support and understanding in this health initiative for our children.



ECO GREEN DAY

As part of our work to renew our Eco Flag we are holding a Green Day on Friday 15th March. On this day the children (and staff!) should come to school dressed in their green clothes. The children will also carry out lots of Eco- Based activities during the day in class, such as paper free lessons, outdoor activities and power down hours- no computers or lights. Parents are also encouraged to talk part by walking/ cycling to school and sending waste free lunch boxes. We would ask for a donation of £1.00 on this day towards our Eco resources.



Homework Policy

Children get little homeworks every night as part of the need to reinforce the learning that they have completed in school earlier that day / week.

We respectfully request that parents sign these homeworks, reading records and homework diaries so that the teacher knows that the parents have seen their child's efforts and support the work of the school. We have also found that this also boosts the child's confidence and self esteem when parents, pupils and teachers are all working together!

Thanks again for supporting and helping us to help our little children!

COMMUNITY NOTICE

Surestart will now be sending us through a message of the month for our Weekly Note. We are delighted to continue to work in partnership with Surestart to bring a better service to children and families in our community.

Less watching more talking...
put everything away and just sing,
talk and play



Sing a rhyme anytime
Start your child learning
for a lifetime!



HSC South Eastern Health
and Social Care Trust

HSC Public Health
Agency

f SureStart

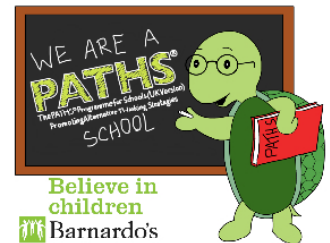
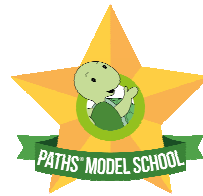


PATHS Programme in St. Catherine's

(Promoting Alternative Thinking Strategies)

PATHS Quote of the Month - March

*Sometimes saying "I'm sorry" seems to be too hard to do.
Maybe you can apologise in different ways – shake hands;
share something or give a compliment.*



Lent begins during March

Prayer of the Month - March



Dear Jesus

*Please help us to be kind,
patient and helpful to each
other during Lent. Help us to
follow directions the first time
we are asked.*

Amen.



Parent / Child Play Workshop

I would be interested in attending a FREE Play Workshop with my child in school given by a professional PLAY TUTOR.

I understand that this is just an expression of interest at this point until a final date and time have been agreed.

Signed: _____

Parent/Gaurdian of: _____

Class: _____

Teacher: _____